



### Officers

- President  
Chris Quinlan  
*Morning View Care Centers*
- President Elect  
Clint Keener  
*Stifel, Nicolaus Co.*
- Vice-President  
Jim Kelly  
*Sprint*
- Secretary  
Jim Hildreth  
*American Family Insurance*
- Treasurer  
Dave "Bear" Martin  
*Pelican Publications*
- Past President  
Mike Forman  
*Forman Realtors*

### Board of Directors

- Mark Adams  
*Attorney*
- David Brehm  
*Firestone, Brehm, Hanson,  
Wolf & Young, LPA*
- LoAnn Burt  
*American Showa, Inc.*
- Bob Hetterscheidt  
*Edward Jones Investments*
- Bob Jenkins  
*Consolidated Electric  
Cooperative*
- Linda Powell  
*Linda's 3 Antiques, Art &  
Framing*
- Allan Roudebush  
*A & M Outdoor Concepts*
- Bob Singer  
*ComDoc, Inc.*
- Lisa Stumpf  
*National City Bank*

## Chamber Board Holds Annual Retreat

The annual retreat of the Chamber Board of Directors took place at the office of Pelican Publications on January 20. The morning began with a special meeting of the Chamber membership to vote on the addition of a Business Advocacy Position statement to the Code of Regulations. The purpose of this amendment is to allow the Chamber Board to directly support the pro-business environment in the community. Provisions are also pending to provide a means for Chamber members to ask for advocacy on their behalf.

During the morning session, nominations were made and voted on, naming the new officers for 2006. The directors also spent time reviewing the Code of Regulations to be sure everyone is familiar with it. In addition to general discussion, there were several recommendations for changes in wording to more suitably fit the mission of the Chamber. The proposed 2006 budget was also approved.

President Chris Quinlan outlined her goals and objectives for the upcoming year. Other topics of discussion included the new membership directory and the Community Open House, Trade Fair & Health Expo to be held on April 6. Each of the board committees met independently to work on goals and objectives for the new year.

## 2006 Directors Elected

The Chamber is pleased to announce the election of Allan Roudebush to the position of director. Allan fills the seat vacated by Melissa Conrath, who has taken a position with the Worthington School District.

Allan was raised in northeastern Ohio, left for school in Oklahoma in 1965, and spent the next 20 years in businesses related to the residential construction industry. In 1985, he relocated to San Diego, where he spent the next 17 years managing five operating companies in the sand, gravel and ready-mix concrete business.

In 2002, Allan and his wife, Marilyn, started an independent manufacturers' rep agency representing several national companies in the commercial outdoor furnishings and playground equipment business. They chose to come back to this area to be closer to home, and to enjoy the people and seasons of central Ohio. They reside in the Galena area, near Hoover Reservoir.

Allan looks forward to being a part of the leadership team of the Chamber. He sees a very exciting future in our community, especially with improved parks, schools and business start-ups in Sunbury and the surrounding area.

LoAnn Burt of American Showa and Bob Singer of ComDoc, Inc., have both agreed to fill another three-year term on the board of directors.

All of the directors can be contacted by visiting the Chamber website and clicking on the Officers and Directors menu.



***2006 Membership Renewal  
invoices have been mailed!***

***Renew today to continue to  
receive the full benefits of  
Chamber membership!***

### **Advertisers in this issue:**

- Consolidated Electric Cooperative
- Forman Realtors, Inc.
- Heston's Greenhouse & Florist
- Molly Kibler
- MidOhio Shredding
- Positive Impact

## Meet our newest Chamber members!

### Delaware Kitchen & Bath Plus

Chris & Jack Keller  
35 South Galena Road, Suite C  
Sunbury, Ohio 43074  
740-965-9299  
E-mail: ckeller16@msn.com  
Kitchen and bath supplies

### Love Me Tender Pet Supply

Linda Rinehart  
101 C West Cherry Street  
Sunbury, Ohio 43074  
E-mail: BigCreekPublishing@msn.com  
Pet supplies

### The Flats Publishing Company

Rachel Edwards  
100 South Columbus Street, Sunbury  
Mail: P.O. Box 186, Galena, OH 43021  
740-965-9848  
E-mail: Newra333@hotmail.com  
Website: www.BoomerWorkbook.com

### Yellow Book USA

Bob Musilek  
110 Polaris Parkway, Suite 325  
Westerville, Ohio 43082  
614-797-4320 fax: 614-797-4455  
Telephone directories

### Advantage Mortgage Group, Inc.

Jon McLaughlin  
870 High Street  
Worthington, Ohio 43085  
614-430-8100 fax: 614-430-8611  
E-mail: Jon@MyMortgageGroup.com  
Website: www.MyMortgageGroup.com  
Residential and commercial mortgage services

### Poland Signs

Michelle Poland  
3799 North Galena Road  
Sunbury, Ohio 43074  
614-774-8268  
Sign printing

### Heavy Duty Truck & Equipment Service, Inc.

Harold Decker  
127 Walnut Street  
Sunbury, Ohio 43074  
740-965-2424 fax: 740-965-4214  
E-mail: Deck953@aol.com  
Truck and heavy equipment repair services

## Leadership Delaware Community Service Day

Saturday, May 6, is the date of the Community Service Day, from 8:00 a.m. to 1:00 p.m. This is an annual event organized by Leadership Delaware County class members, with involvement from Leadership alumni, Youth Leadership class members, and many other community volunteers and friends.

The theme this year is "Lending Helping Hands to Senior Citizens and Others in Our Community." Some of the work to be completed will be inside and outside clean-up, household chores, gardening, painting and litter control.

The gathering site in Delaware will be Dempsey Middle School, and in Sunbury at Community Library. Forms to sign up to volunteer or to ask for services are available at Community Library and the Chamber office. We encourage you to recruit members of your church, school, scout troop or work place to volunteer. For additional information contact Cindy Hall at 740-965-2860 or Tracy Whited at 740-369-6221.



## MidOhio Shredding



HIGH SECURITY SHREDDING - PAPER & MORE

278 DEWFALL DR.  
SUNBURY, OH 43074

FRANK WASKO  
OWNER

w (614) 374-7918

WWW.MIDOHIOSHRED.COM



Dave Martin  
President

130 Stelzer Court  
Sunbury, Ohio 43074

phone: 740-965-4740

fax: 740-965-9969

email: pozitiv130@aol.com

*You name it, we'll put  
your name on it!*

*Living, Learning & Working in the Big Walnut Area*

# **Eighth Annual Community Open House, Trade Fair & Health Expo!**

**Thursday, April 6, 2006**

**5:00 – 8:00 p.m.**

**Big Walnut High School**

555 S. Old 3C Highway  
Sunbury, Ohio

*Free Admission!*

*Free Admission!*

- ◇ Over 100 exhibitors!
- ◇ Free or reduced cost health screenings

including, but not limited to:

- Blood Sugar
  - Cholesterol
  - Hemoglobin
  - Spinal
  - Hearing
  - Blood Pressure
- ... and more!

- ◇ Community service organizations!
- ◇ Student displays and presentations!

- ◇ Food!
- ◇ Entertainment!
- ◇ Door prizes!

**JOIN  
US!**



*Sponsored by*

**National City**

**Anthem Blue Cross Chamber Plan**

**Consolidated Electric Cooperative**

**Delaware-Morrow Mental Health & Recovery Services Board**

**Forman Realtors, Inc.**

**Manos, Martin, Pergram & Dietz Co., LPA**

**MidOhio Shredding**

**Sprint**

**Sunbury Urgent Care Center**

**Virgil's Jerky Plus**

*Hosted by*

**Sunbury/Big Walnut Area Chamber of Commerce and  
Big Walnut Local Schools**



# Sunbury/Big Walnut Area Chamber of Commerce

## Farmers' Market

Spring will be here before we know it and so will the Sunbury Farmers' Market! The Farm Market committee will be meeting soon to discuss plans for this year. They are planning to begin in late May and run until sometime in October, every Saturday from 9:00 a.m. until noon on the square.

Last year was a great success, and we expect the same again this year. Vendors have already been inquiring about signing up and are excited about planning their gardens to offer an even bigger selection of items.

The committee would like to encourage volunteers to sign up to help one Saturday per month. If you have an interest in being part of this year's Farmers' Market, please contact Bob Hetterscheidt at 740-965-6401.

---

### Oberfield's 45th Anniversary

#### Customer Appreciation Day

Thursday, June 8, 2006, 3:00 - 7:00 p.m.

777 West Cherry Street, Sunbury



Dear Members and Friends of the Chamber,

Oberfield's is excited to be celebrating 45 years of serving the concrete masonry industry. We will be holding a Customer Appreciation Day at our Sunbury location, and would like to extend this invitation to all of our friends and members of the Sunbury/Big Walnut Chamber.

Please join us for food, entertainment, tours and a good time with fellow Chamber members and the Oberfield family of customers. Attendees will also be some of the first to see the new Oberfield's showroom, complete with an outdoor display of our landscape products.

Mark your calendars to join us! Please R.S.V.P. to the Chamber office at 740-965-2860 if you plan to attend.

### Delaware to Host Free Cultural Series

Guess who's coming to Delaware June 14 through 18?

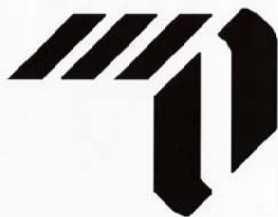
Clara Barton, Teddy Roosevelt, Ernie Pyle, Chief Cornstalk and Francisco Pizarro.

It's all part of Ohio Chautauqua in Delaware, a free event combining living history presentations, music, theatre and workshops for the entire community.

Delaware was selected as one of only five communities in Ohio to host this free cultural series. Five performers will be in town June 14 - 18 to bring living history performances based on the lives of famous historical characters.

The events will begin with musical entertainment by local groups, then actors will appear in period costume, under a red and white tent, and bring history to life. The performances will offer the audience an opportunity to go back in time and ask questions of these historical figures. Presenters will step out of character to offer a variety of daytime workshops for both adults and youth at various sites in Delaware.

Shows will be held on the Ohio Wesleyan University campus. For more information or a schedule of events, call the Delaware County District Library at 740-362-3861 or the Ohio Humanities Council at 1-800-293-9774, or visit [www.delawarelibrary.org](http://www.delawarelibrary.org) or [www.ohiohumanities.org](http://www.ohiohumanities.org).



**OBERFIELD'S INC.**

SOLID PERFORMANCE IN CONCRETE PRODUCTS

## Calendar of Events

### March

- 18 Farmers' Share Breakfast - 8:00 - 11:00 a.m.  
Dempsey Middle School, Delaware - see details below  
30 - April 8 Sunbury Antique Dealers  
Spring Open house - see page 2 for details

### April

- 6 Community Open House, Trade Fair & Health Expo  
5:00 - 8:00 p.m. Big Walnut High School  
10 - 14 BW Schools Spring Break  
17 Chamber Board - 11:30 a.m. Town Hall  
21 Chamber Breakfast - 7:30 a.m. Bent Tree Golf Club  
Sponsored by Sprint and Hyper Sounds DJ & Vocal  
Service - BW High School Student & Teacher  
Recognition  
28 Chamber Executive Committee

### May

- 6 Leadership Delaware County Community Service Day  
7:00 a.m. - 1:00 p.m. meet at Community Library  
6 Community Garage Sale & Cookout for Cancer  
8:00 a.m. Sunbury Square  
8 Chamber Board - 11:30 a.m. Town Hall  
27 BW High School Graduation - 11:00 a.m.  
29 Memorial Day Flea Market - 7:00 a.m. Sponsored by  
M & M Boosters, Parade 10:00 a.m.

### June

- 2 Chamber Executive Committee - 8:30 a.m.  
Pelican Publications  
8 Oberfield's 45th Anniversary Customer Appreciation  
Day - 3:00 to 7:00 p.m., 777 W. Cherry St., Sunbury  
See details on page 4  
9 Chamber Breakfast - 7:30 a.m. Bent Tree Golf Club  
Sponsored by Forman Realtors and Firestone,  
Brehm, Hanson, Wolf & Young, LLP  
12 Chamber Board - 11:30 a.m. Town Hall  
14 - 18 Ohio Chautauqua in Delaware - see page 4 for details  
30 Chamber Executive Committee—8:30 a.m.  
Pelican Publications

### July

- 4 Independence Day Flea Market, Parade & Fireworks  
Sponsored by the Chamber of Commerce

### Regularly Scheduled Community Meetings

- Big Walnut Area Historical Society - 3rd Tuesday of each month,  
Community Library  
Big Walnut Friends Who Share - 2nd Wednesday of each month,  
PJ's Pizza  
Big Walnut Lions Club - 1st and 3rd Tuesday of each month,  
Lions Building  
Big Walnut School Board - 2nd Monday of each month, Big  
Walnut High School Media Center  
Community Library Board - 2nd Tuesday of each month,  
Community Library  
Delaware County Friends of the Trail - 4th Wednesday of each  
month, Galena United Methodist Church  
Galena Village Council - 4th Monday of each month  
Sunbury/Galena Rotary Club - every Tuesday, Town Hall  
Sunbury Lions Club - 2nd & 4th Monday of each month,  
Sunbury United Methodist Church  
Sunbury Village Council - 1st & 3rd Wednesday of each month,  
Town Hall  
Sunbury Zoning Meeting - 4th Monday of each month, Town Hall

## Sunbury/Big Walnut Area Chamber of Commerce Breakfast

**Date:** Friday, April 21, 2006

**Time:** 7:30 a.m.

**Location:** Bent Tree Golf Club



*Sponsored by*

**Sprint**

*and*

**Hyper Sounds DJ & Vocal Service**

Join us for breakfast and take advantage of this opportunity to meet and greet other Chamber members. Breakfast is free, thanks to our sponsors, but reservations are required.

Big Walnut High School students and a teacher will be recognized for outstanding achievement.

**Please call the Chamber office at 740-965-2860 by Tuesday, April 18, with your reservation!**



### 5th Annual Farmers' Share Breakfast

Saturday, March 18, 2006

8:00 - 11:00 a.m.

Dempsey Middle School  
599 Pennsylvania Avenue, Delaware

Sponsored by the  
Delaware County Farm Bureau,  
local businesses and farmers



All you can eat eggs, sausage, pancakes, coffee,  
juice and milk  
50 cents per person



*"Integrity, Knowledge, and Value"*

**Carolyn Slone**

carolyns@formanrealtors.com

Cell (740) 971-5939

Res. (740) 369-3610

44 South Kintner Parkway, Suite C, Sunbury, Ohio 43074

Phone: (740) 965-1212 Fax: (740) 965-3342

www.formanrealtors.com



# HESTON'S

## GREENHOUSE & FLORIST

Heston's Greenhouse & Florist has served the Sunbury-Galena area professionally since 1984. It has always been our goal to provide our customers with 100% satisfaction.

Please allow us the opportunity to show you how Heston's QUALITY & SERVICE can make your next floral purchase a meaningful & rewarding experience.

Mention this ad and receive free local delivery (Sunbury-Galena) on your Administrative Professional Day delivery.

### Important Floral Holidays

Holiday	2006
New Year's Day	Sun Jan 1
Valentine's Day	Tue Feb 14
St. Patrick's Day	Fri Mar 17
Passover*	Thu Apr 13
Easter Sunday	Sun Apr 16
Administrative Professionals & Secretaries' Day (US)	Wed Apr 26
Cinco de Mayo	Fri May 5
National Teachers Day	Tue May 9
Nurses' Week	Sat May 6 - 12
Mother's Day	Sun May 14
Father's Day	Sun Jun 18
Grandparents' Day	Sun Sep 10
Rosh Hashanah*	Sat Sep 23
Yom Kippur*	Mon Oct 2
Thanksgiving Day (Canada)	Mon Oct 9
National Boss's Day (US)	Mon Oct 16
Sweetest Day	Sat Oct 21
Halloween	Tue Oct 31
Thanksgiving Day (US)	Thu Nov 23
Hanukkah*	Sat Dec 16
Christmas Day	Mon Dec 25
Boxing Day (A. C, NZ, UK)	Tue Dec 26
Kwanzaa	Dec 26 - Jan 1

# HESTON'S

## GREENHOUSE & FLORIST

[www.hestonsflorist.com](http://www.hestonsflorist.com)

740-965-4648

\*All Jewish holidays start at sundown the day before they are listed

**Group One Realty, Inc. Commercial Real Estate**  
**Call: Molly Kibler 614.888.3456 x205, listing agent**

*Businesses For Sale in Morrow County:*



**Main Street Motors**, US RT 42, Cardington. Next to Hardware Store, 15 minutes North of Delaware County. Sale includes Real Estate-approx. .21 acre, 3 bay garage, 2 lifts, office, storage room, two restrooms, excellent location-high visibility for any type of retail. \$110,000.00



**Patrick's Café** in Cardington. Well Established Restaurant with Real Estate and apartment income. Good numbers 2 parcels. Seats 45 in dining area, has banquet room. Sale includes all F F and E. Seller retiring. \$249,900.00



**Pins 'n Cues Bowling Center**, PRICE REDUCTION now at \$250,000.00 (below Appraised value). Has city water and sewer. Sale includes Real Estate of approx. 1.50 acres and an 11,120 sqft. block bldg., All Equipment, lane conditioner, Full Kitchen, 3 phase 400 amp electrical service, parking for 65+ cars, Thunder Alley. Wooden Lanes in great condition with bumpers. Brunswick Bowling Machines.



**MC Auto Sales**. Buy here pay here. Excellent location on Main Street, Mt. Gilead, traffic count of ~10,000 cars per day. Established business with good numbers. Includes real estate of ~.25 acre, with all utilities. \$140,000.00



**Capital Cinema 5**, Bucyrus, in Southern Light Shopping Center. Only Theatre in county. Sale includes business & all F F & E. Has Touch Screen computerized concessions and ticket purchasing. 5 screens, 35 mm cameras, seating varies fr. 95—170 in ea. theatre. Surround sound & DTS sound sys. \$89,500.00



**Apple Pie Inn Restaurant and gas station**. Johnsville, located at US RT 42 & ST RT 314. Long time established business, good numbers. Includes Real Estate of 1 ac., all F F & E. Has 3 gas tanks new as of 1999—clean site. Original business dates back to 1930's. Next nearest gas sta. 7mi.



**Hersh's Countryside Restaurant**, near US RT 42 & ST RT 314, Johnsville. Very clean, 3 phase elec., new roof in 1996, 2 furnaces, 3 air-conditioners, walk in freezer, break room, ice cream counter. Sale includes real estate of 1 ac. Plus house. Long time estab. with good numbers. Seats 85. \$299,000.00

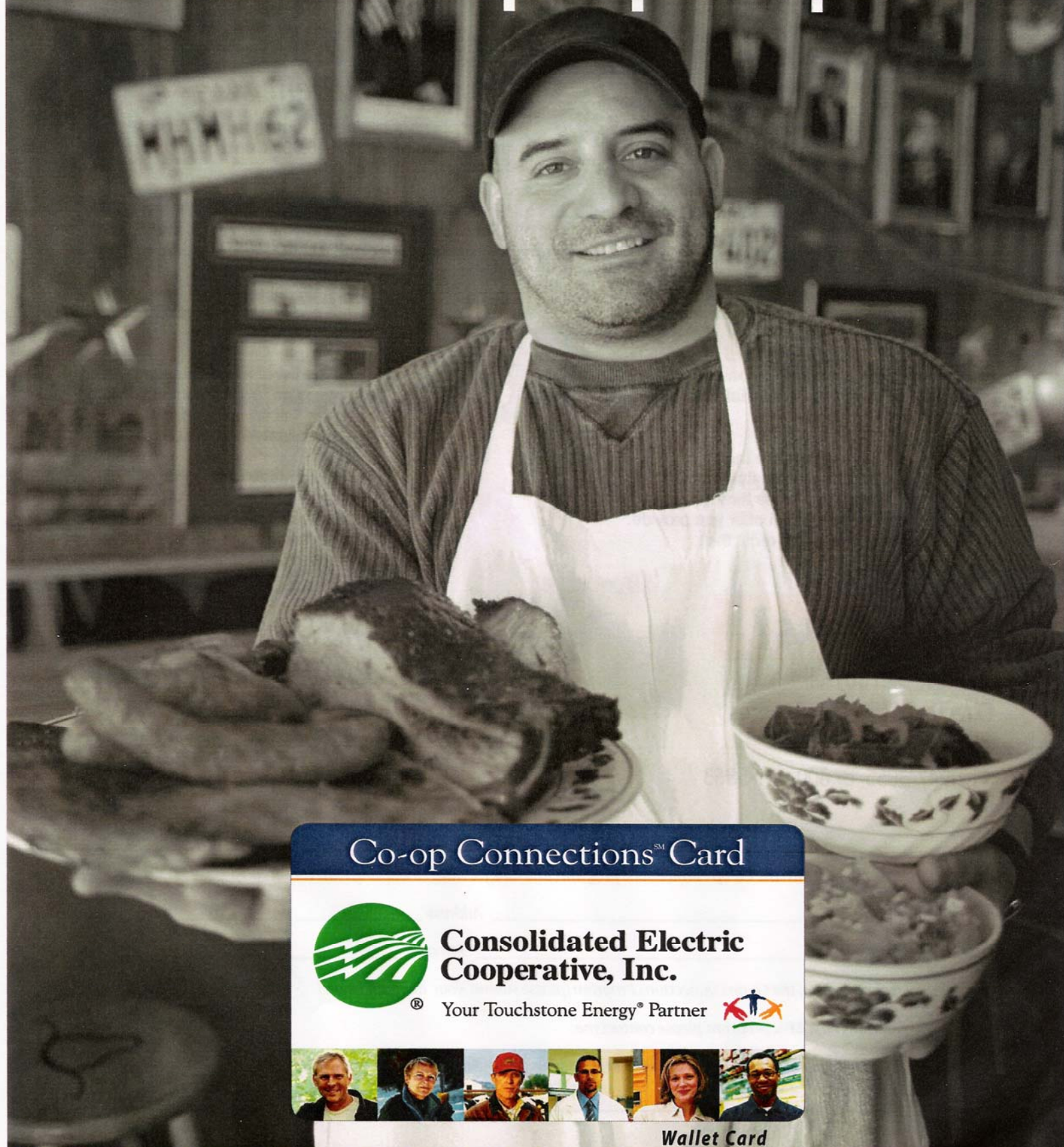


**FOR LEASE: Free standing bldg.** Pictured is former Doctors office. Next to brand new Family Dollar on US RT 42, Handicap accessible, offices, kitchen, and parking lot with high visibility. In Cardington, only 15 minutes North of Delaware County. Good demographics, new schools and 24/7 police department.



**FOR LEASE: Free Standing bldg. RETAIL or OFFICE SPACE**, in Village of Cardington, on Main St., ALL NEW electric, plumbing, HVAC, approx 1000 sqft. \$510.00 per mo.

# What helps people...



Co-op Connections<sup>SM</sup> Card



**Consolidated Electric  
Cooperative, Inc.**

® Your Touchstone Energy® Partner



Wallet Card

Free Marketing. National Exposure. No Fuss.



# What helps people... helps business.

The Co-op Connections card program delivers added value to our members by providing special offers at participating local and national businesses.

When the Co-op Connections card is shown the member receives a special offer; and equally, the business benefits from increased customer visits by co-op members.

In addition, Co-op Connections cards can be used throughout the country at thousands of participating businesses.

As a participating business you have the opportunity to change your special offer at the end of every year.

The one-year term helps make the special offers consistent so customers can visit your business many times throughout the year, knowing the special offer you provide. To enroll, please fill-out and remit the provided form.

## How do you benefit?

- Promote your business! Participating businesses are promoted to more than 16,000 Consolidated Electric Members.

- Promote your special offer! Develop your own unique offer to draw customers to your business, and Consolidated Electric Cooperative takes care of the rest!

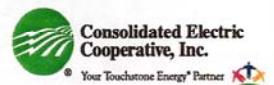
- Gain national exposure! Your name is promoted on the national Co-op Connections website.

To see the list of all participating businesses go to [www.connections.coop](http://www.connections.coop) or use the link on our website [www.consolidatedelectric.coop](http://www.consolidatedelectric.coop).

- Take advantage of free marketing! Several times throughout the year we'll publicize participating businesses and their special offers in Country Living Magazine, in newspaper ads, and in bill inserts.



## And best of all, it's absolutely FREE!



## Questions?

Contact: Dan Boysel,  
Director of Member Services  
[dboysel@conelec.com](mailto:dboysel@conelec.com)  
419-947-3055 or 800-421-5863

We appreciate your interest with the Co-op Connections program, and look forward to working with you in 2006!

Business Name: \_\_\_\_\_ Address: \_\_\_\_\_

Contact Name: \_\_\_\_\_ Phone: \_\_\_\_\_

Yes, please enroll me in the Co-op Connections Program (please submit your discount below)

I have questions about the program, please contact me.

I wish to offer the following Co-op Connections discount (a representative will contact you to confirm details):



Mail to: Co-op Connections Card Program, Consolidated Electric Cooperative, Inc., 5255 St. Rt. 95, P.O. Box 111, Mt. Gilead, OH 43338

(419) 947-3055

(800) 421-5863

[www.CONSolidatedelectric.coop](http://www.CONSolidatedelectric.coop)